

Instruction Manual for CMOS2
5-in-1 Rear-view Camera

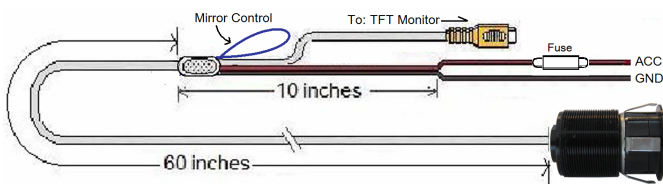
Dear Customer,
CONGRATULATIONS! This 5-in-1 high resolution rear-view camera kit when used as described can be installed in 5 different ways and will improve your ability to see what behind your car, CRV or mini-van. We have taken numerous measures in quality control to ensure that your products arrive in top condition and will perform to your satisfaction.

BEFORE YOU INSTALL

Automotive video equipment installations can be difficult at times, even to the most experienced installation technicians. If you are not confident working with 12 volt DC vehicle wiring, removing and reinstalling interior panels, carpeting or other components of your vehicle, contact the vehicle's manufacturer or consider having the system installed professionally.

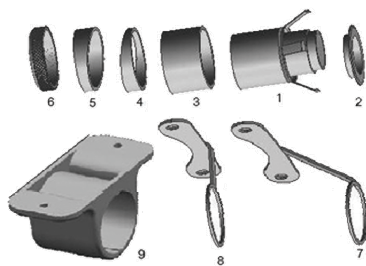
PARTS

1. Camera main body with 70" power and signal cable.



2. Parts package listed below:

- Camera main unit
- Trim Ring
- Main ring
- Slim angle ring
- Angle ring
- Locking ring
- Long butterfly bracket
- Short butterfly bracket
- Surface mount bracket



INSTALLATION INSTRUCTIONS

This camera kit can be in the following installations:

- a. Bumper Mounted
- b. Traditional Drilled/Angled Mount
- c. With Long Butterfly Style Bracket
- d. With Short Butterfly Style Bracket
- e. Surface Mounted Style

NOTE: The Trim Ring (Part no #2) can be painted in any color and then replaced to match the Vehicle Color. DO NOT PAINT ON THE CAMERA.

A. Bumper Mounted

Before you drill a hole on the rear bumper, you must check what is behind where you are drilling. If there are any vehicle components, such as electrical parts or fuel system components behind where you are drilling, you must take whatever precaution necessary not to damage them. Insure you have enough depth for the camera housing.

1. You will only need #2 attached to the camera.
2. Use a 15/16" diameter hole saw to drill a hole on the rear bumper.
3. Insert the camera cable into the hole and carefully feed through the hole. Route the cable into the trunk or Tail Light Housing area.
4. Connect the camera power cable: Red to reverse lamp power +12V and black to ground.
5. Connect the monitor and camera using a video coax cable.



NOTE: DO NOT USE AN AUDIO RCA CABLE.

B. Traditional Drilled/Angled Mount

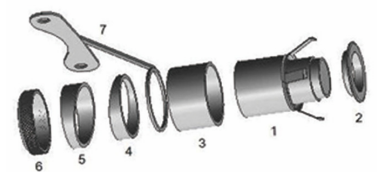
1. Parts # 3, 4, 5, &6 may be used depending on the mounting location selected. Use any combination to adjust to your required mounting angle.
2. Use a 15/16" diameter hole saw to drill a hole in the mounting location.
3. Insert the camera cable into the hole and carefully feed through.
4. Route the cable into the trunk or tail light housing area.
5. Connect the camera power cable: Red to reverse lamp power +12V and black to ground.
6. Connect the monitor and camera using a video coax cable.



NOTE: DO NOT USE AN AUDIO RCA CABLE.

C. Long Butterfly Style Bracket

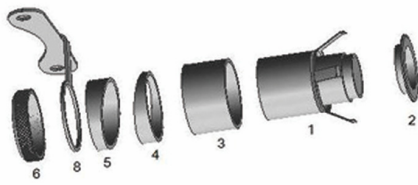
1. Parts #2, #1 #3, #7, #4, #5 and #6 May be for the Butterfly mount at any position on the camera.
2. Mount the camera using two screws. Always inspect the installation location to verify there is nothing located behind your mounting location.
3. Route the cable into the trunk or tail light housing area.
4. Connect the camera power cable: Red to reverse lamp power +12V and black to ground.
5. Connect the monitor and camera using a video coax cable.



NOTE: DO NOT USE AN AUDIO RCA CABLE.

D. Short Butterfly Style Bracket

1. Parts #2, #1, #3, #4, #5, #8 and #6 may for the Butterfly mount at any position on the camera.



2. Mount the camera using two screws. Always inspect the installation location to verify there is nothing located behind your mounting location.
3. Route the cable into the trunk or tail light housing area.
4. Connect the camera power cable: Red to reverse lamp power +12V and black to ground.
5. Connect the monitor and camera using a video coax cable.



NOTE: DO NOT USE AN AUDIO RCA CABLE.

E. Surface Mounted Plastic Bracket

1. Combine Parts #2, #1, #9, #2 and #6.
2. Mount the camera using two screws. Always look before you screw into the vehicle to make sure there is nothing located behind your mounting location.
3. Route the cable into the trunk or Tail Light Housing area.
4. Connect the camera power cable: Red to reverse lamp power +12V and black to ground.
5. Connect the monitor and camera using a video coax cable.

NOTE: DO NOT USE AN AUDIO RCA CABLE.



12 MONTH LIMITED WARRANTY

Applies to Audiovox Series Control Modules and Sensors.

AUDIOVOX Electronics Corporation (the Company) warrants to the original retail purchaser of this product that should this product or any part thereof, (other than transmitters) under normal use and conditions, be proven defective in material or workmanship within 12 months from the date of original purchase, such defect(s) will be repaired or replaced with new or reconditioned product, (at the Company's option) without charge for parts or repair labor.

To obtain repair or replacement within the terms of this Warranty, the product is to be delivered with proof of warranty coverage (e.g. dated bill of sale), specification of defect(s), transportation prepaid, to an approved warranty station. This Warranty is not assignable or transferable. This Warranty does not cover damage to the vehicle's electrical system or costs incurred for removal or reinstallation of the product. This Warranty does not cover batteries nor apply to any product or part thereof which, in the opinion of the Company, has suffered or been damaged through alteration, improper installation, mishandling, misuse, abuse, neglect, accident, or by removal or defacement of the factory serial number/bar code label(s). This Warranty is in lieu of all other express warranties or liabilities. ANY IMPLIED WARRANTIES, INCLUDING ANY IMPLIED WARRANTY OF MERCHANTABILITY, SHALL BE LIMITED TO THE DURATION OF THIS WRITTEN WARRANTY. ANY ACTION FOR BREACH OF ANY WARRANTY HEREUNDER INCLUDING ANY IMPLIED WARRANTY OF MERCHANTABILITY MUST BE BROUGHT WITHIN A PERIOD OF 24 MONTHS FROM THE DATE OF ORIGINAL PURCHASE. IN NO CASE SHALL THE COMPANY BE LIABLE FOR ANY CONSEQUENTIAL OR INCIDENTAL DAMAGES FOR BREACH OF THIS OR ANY OTHER WARRANTY. No person or representative is authorized to assume for the Company any liability other than expressed herein in connection with the sale of this product.

The company does not warrant that this product cannot be compromised or circumvented. THE EXTENT OF THE COMPANY'S LIABILITY UNDER THIS WARRANTY IS LIMITED TO THE REPAIR OR REPLACEMENT PROVIDED ABOVE AND, IN NO EVENT, SHALL THE COMPANY'S LIABILITY EXCEED THE PURCHASE PRICE PAID BY PURCHASER FOR THE PRODUCT WITHOUT COST OF INSTALLATION.

Some states do not allow limitations on how long an implied warranty lasts or the exclusion or limitation of incidental or consequential damage so the above limitations or exclusions may not apply to you. This Warranty gives you specific legal rights and you may also have other rights which vary from state to state.

Audiovox Electronics Corporation
150 Marcus Blvd.
Hauppauge, New York 11788
1-800-645-4994